

Nexans Switches Frequently Asked Questions IV Switch Replacement via “Fixed IP Address”

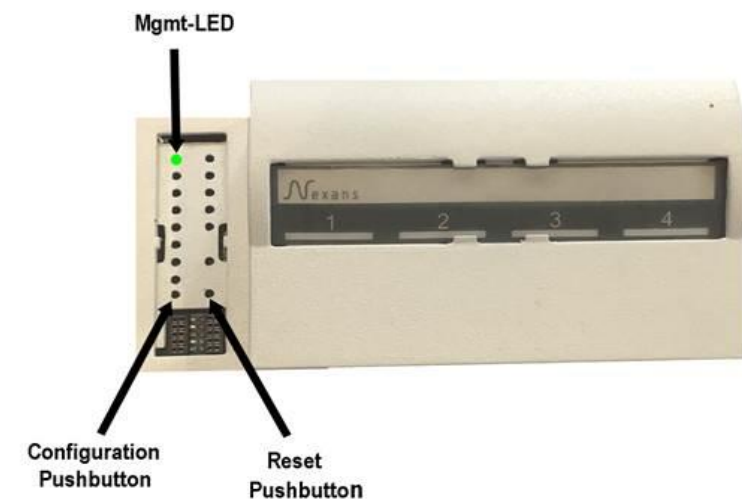
Version 1

This document describes, how to replace a switch and push its configuration to a new one via “Fixed IP Address”.

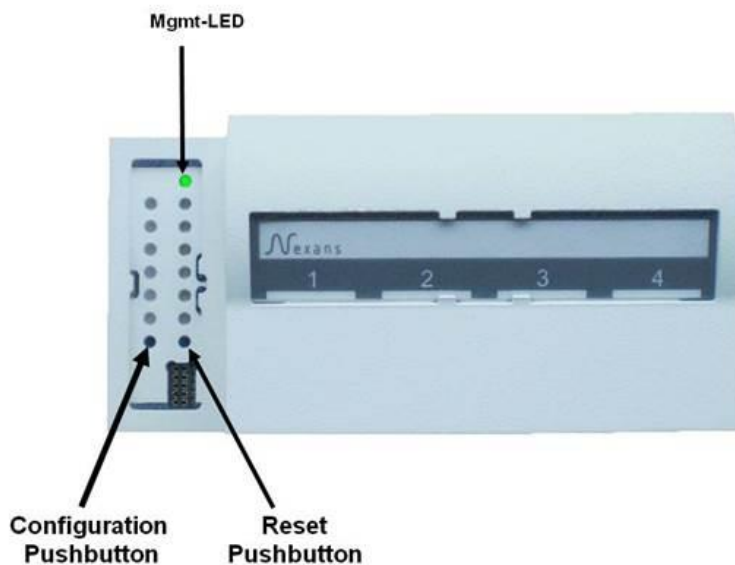
This method is especially useful if the old switch has no memory card to transfer the configuration.

1. Start the new Switch with “Fixed IP Address”

GigaSwitch V5:



GigaSwitch V3:



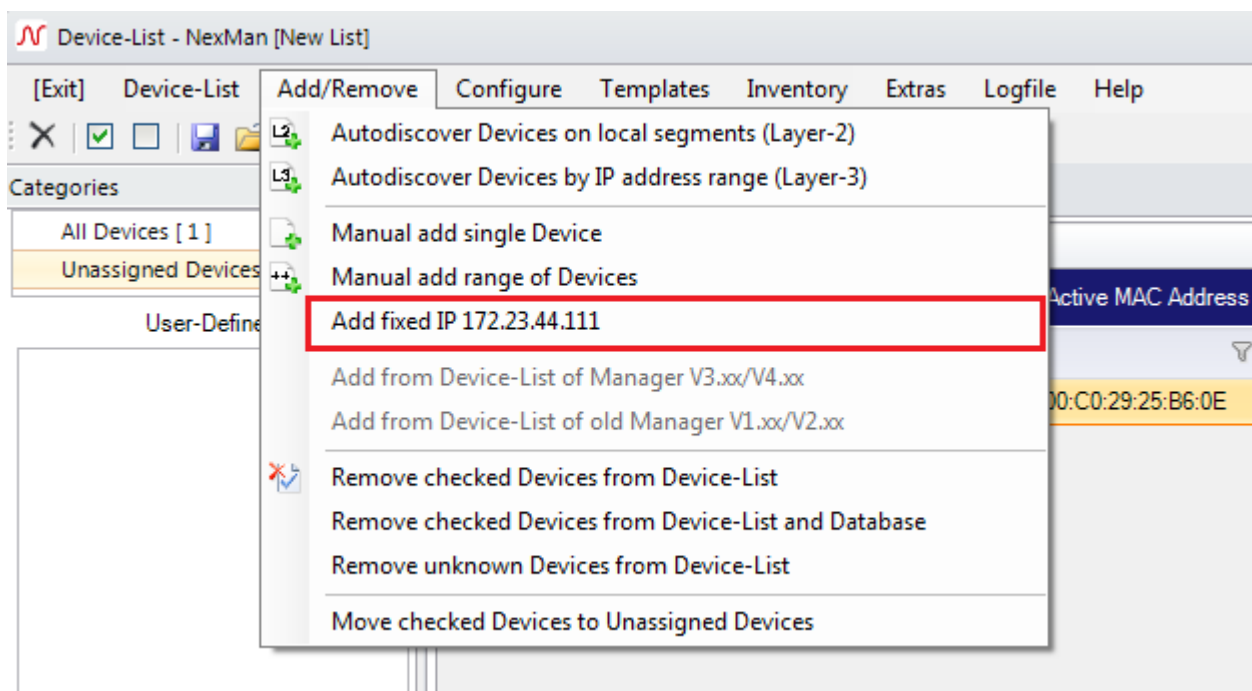
Start the new switch with a fix IP address (see also in the manual):

- Press and hold the configuration pushbutton (min. 3 seconds). The switch will change into the configuration mode, which is indicated by the Mgmt-LED going off. As soon as the Mgmt-LED is permanently off, the configuration pushbutton must be released again. A rapidly flashing blue Mgmt-LED shows that function number 1 has been selected.
- Then press the configuration pushbutton briefly one time. The led should turn red.
- And finally, in order to execute the function, the configuration pushbutton must be pressed and held for at least 3 seconds. The Mgmt-LED flashes briefly and goes out to show that the switch has accepted the command. Now the configuration pushbutton can be released and the switch will boot to execute the command.

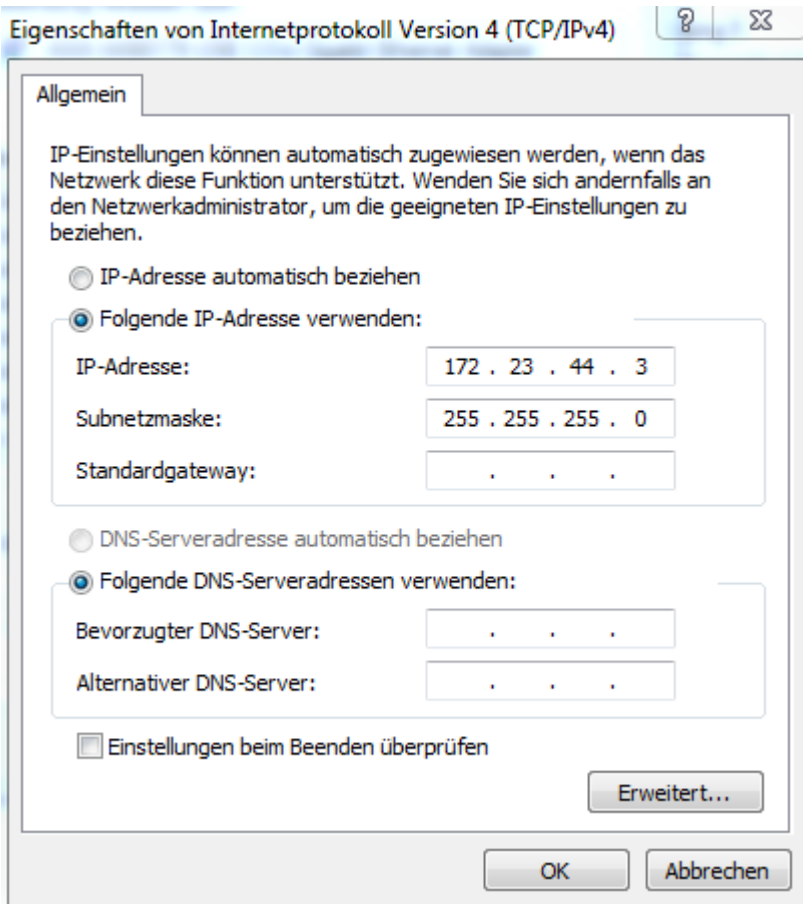
Your device will start with the fixed IP address 172.23.44.111. After booting with fix IP address the Mgmt-LED must light red permanently.

2. Add “Fixed IP Address” to Device-List

To add the Switch to your device-list in NEXMAN, select in the “Add/Remove” menu: “Add fixed IP 172.23.44.111”



Then configure the network card of your computer connected to this switch, so that it matches IP range 172.23.44.x.

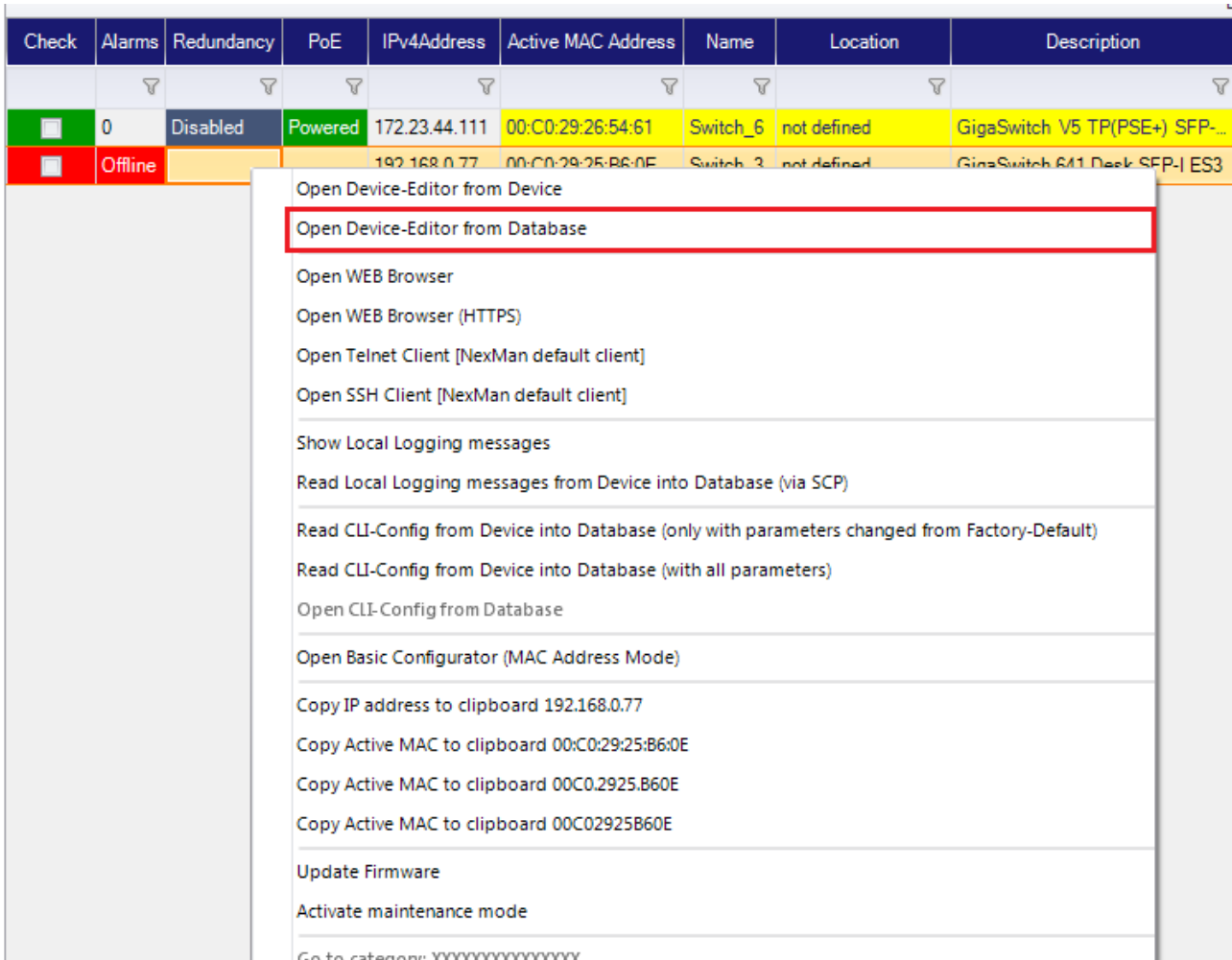


The switch should be now reachable.

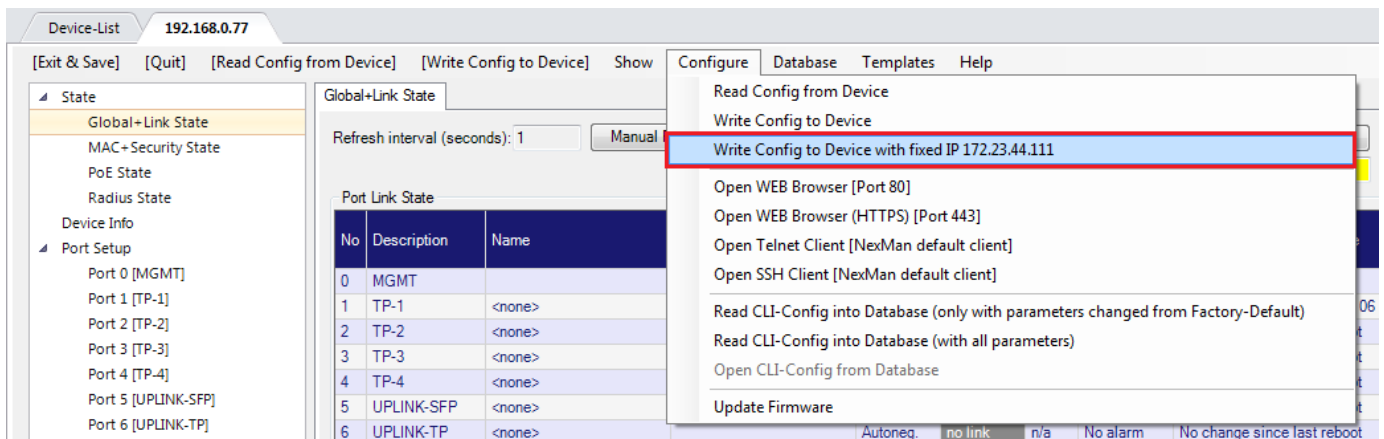
Device-List							
Check	Alarms	Redundancy	PoE	IPv4Address	Active MAC Address	Name	Location
<input type="checkbox"/>	0	Disabled	Powered	172.23.44.111	00:C0:29:26:54:61	Switch_6	not defined
<input type="checkbox"/>	Offline			192.168.0.77	00:C0:29:25:B6:0E	Switch_3	not defined

3. Copy the old Switch's configuration on the new Switch

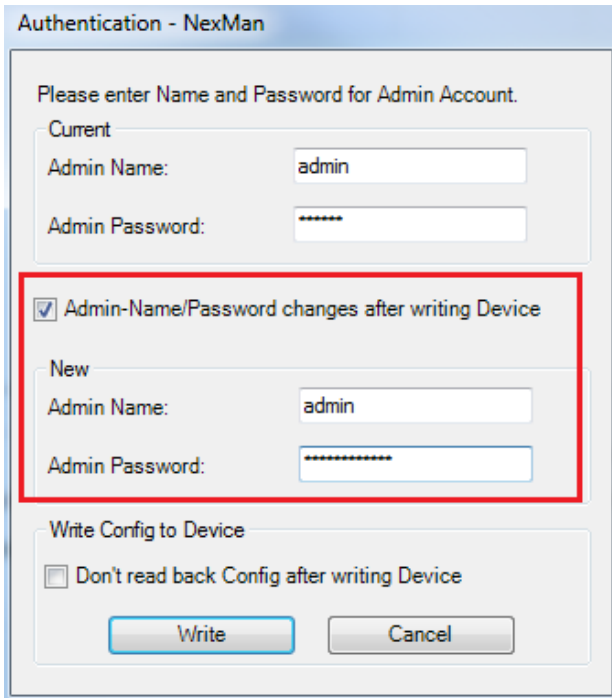
In NEXMAN, open in Device-Editor, the configuration of the switch that you need to replace:
To do so, right click on the switch in the Device-list, and select **“Open Device-editor from Database”**



Then in the Device-Editor, select in the menu **“Configure”** the option **“Write Config to Device with fixed IP 172.23.44.111”**

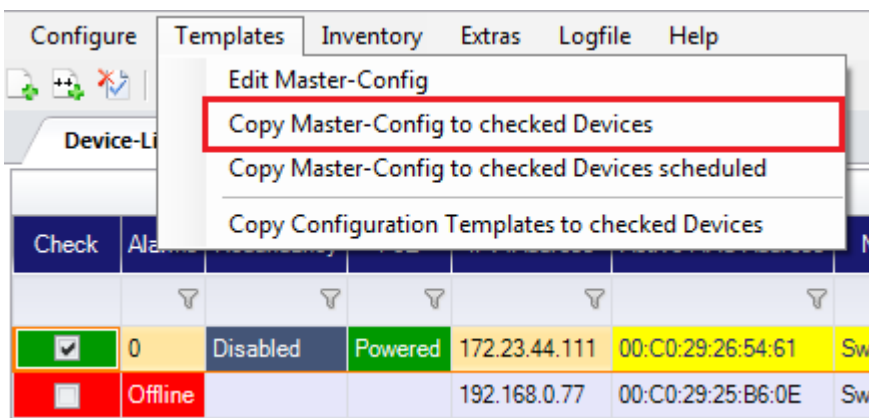


Enter the current credentials of the new Switch (by factory default “admin” and password “nexans”), and if the credentials are changed with the new configuration enter the new credentials in the bottom part of the window:

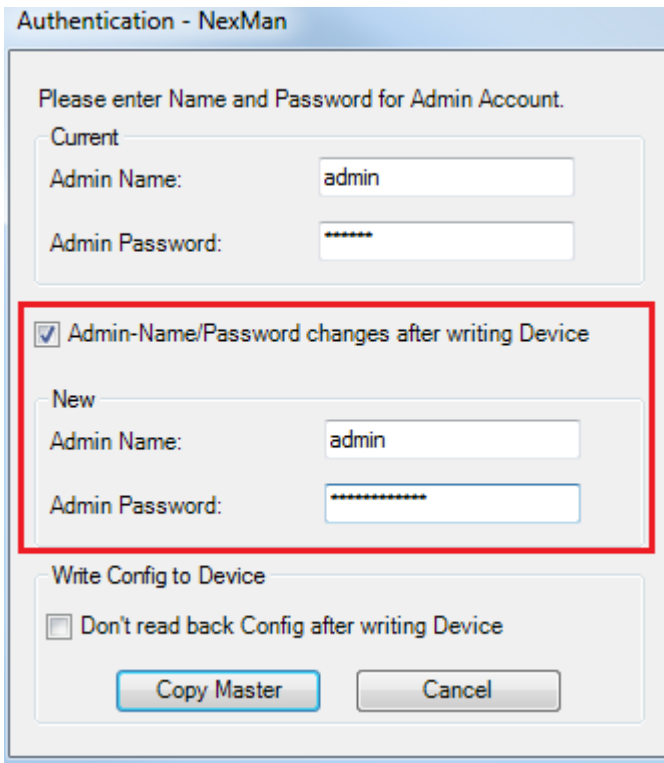


4. OPTIONAL: Deploy a Master-Config to the new switch

Select with the check-box the fixed IP address, then select in the menu “Templates” the option “Copy Master-Config to checked Devices”



Select the master-config file you want to deploy. Then enter the current credentials of the new Switch, and if the credentials are changed with the maser-config enter the new credentials in the bottom part of the window:



5. Restart your Switch

Wait at least 30 seconds before disconnecting switch from power. With the next reboot, all settings will be valid.